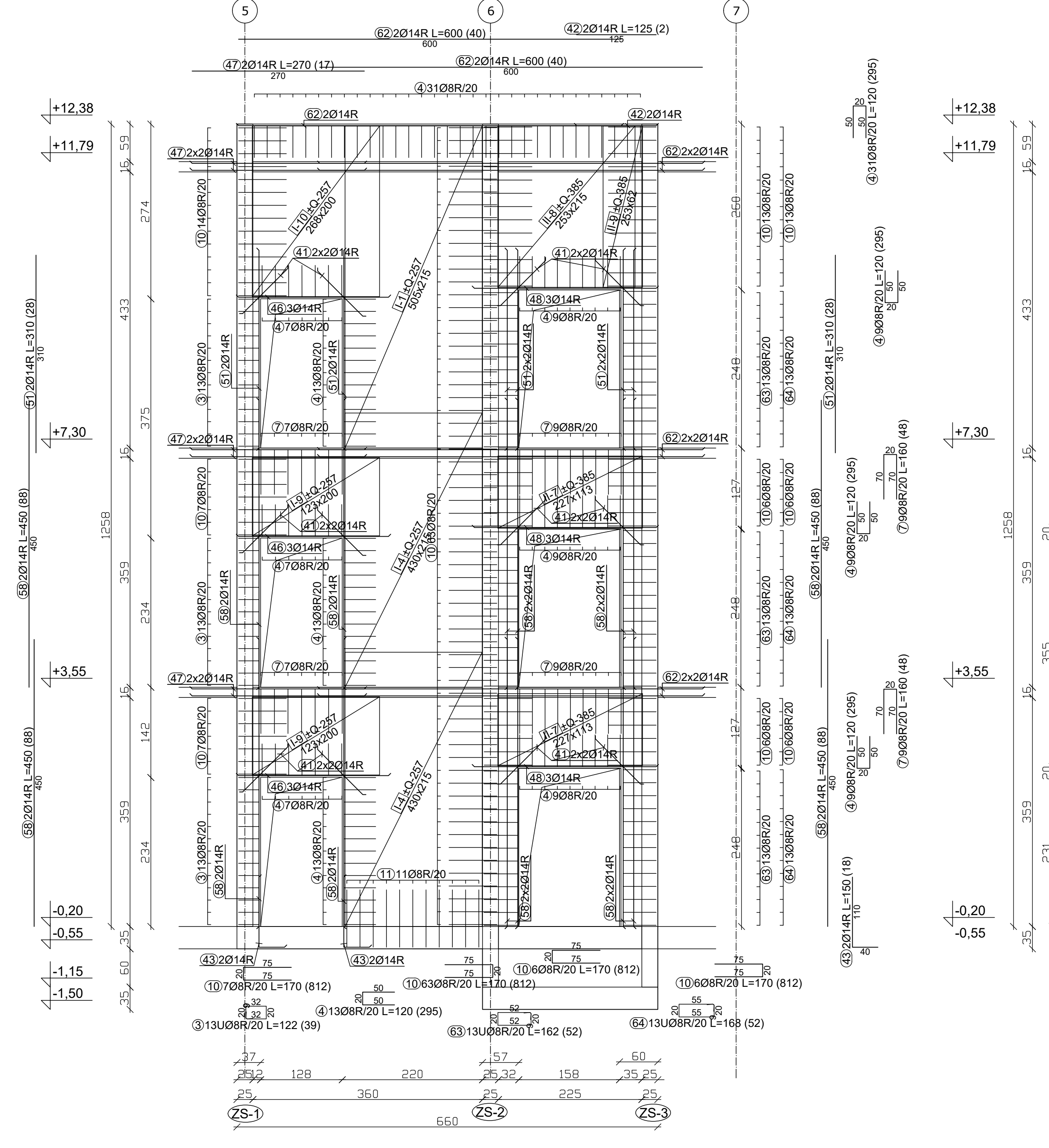
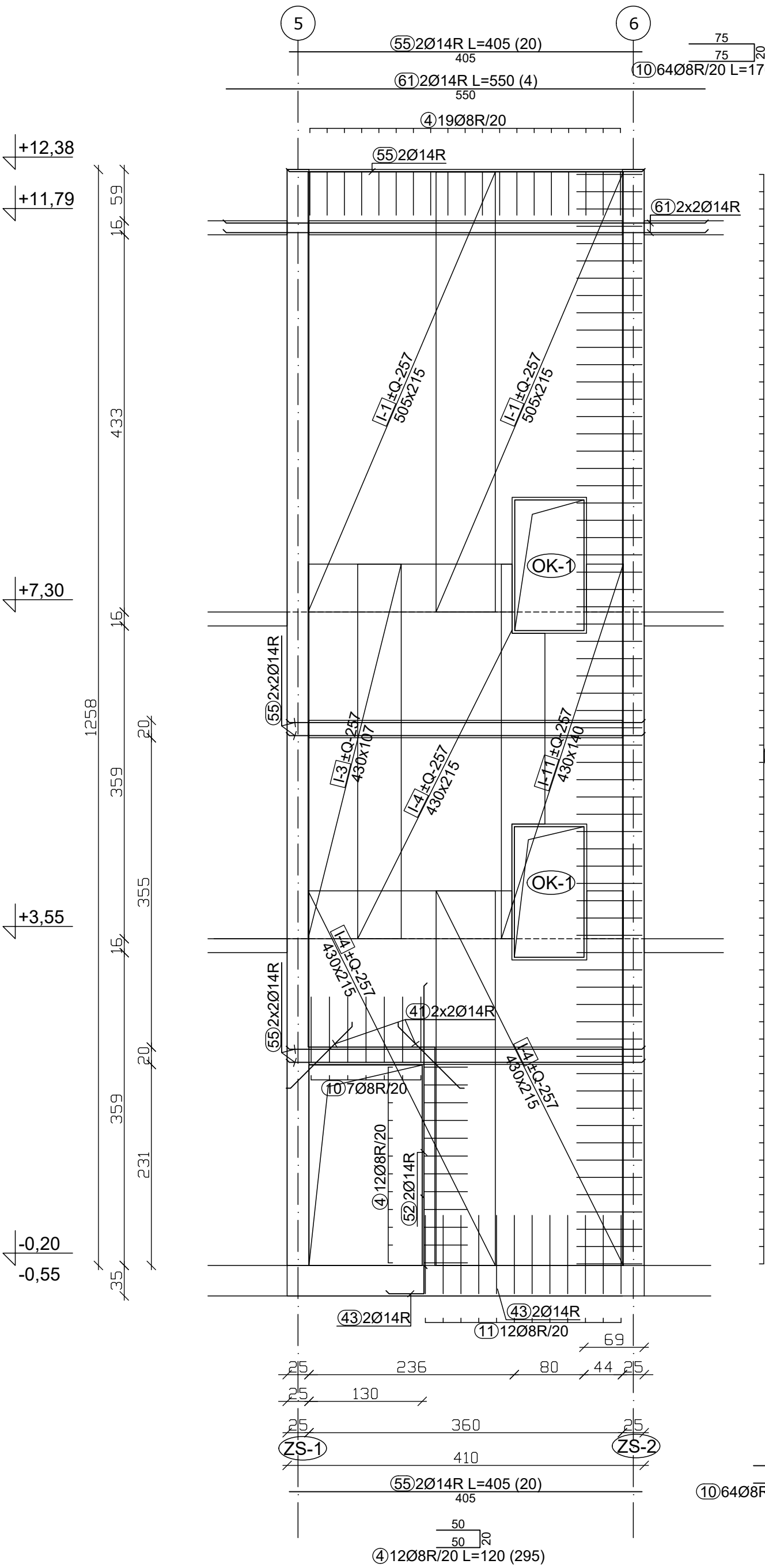


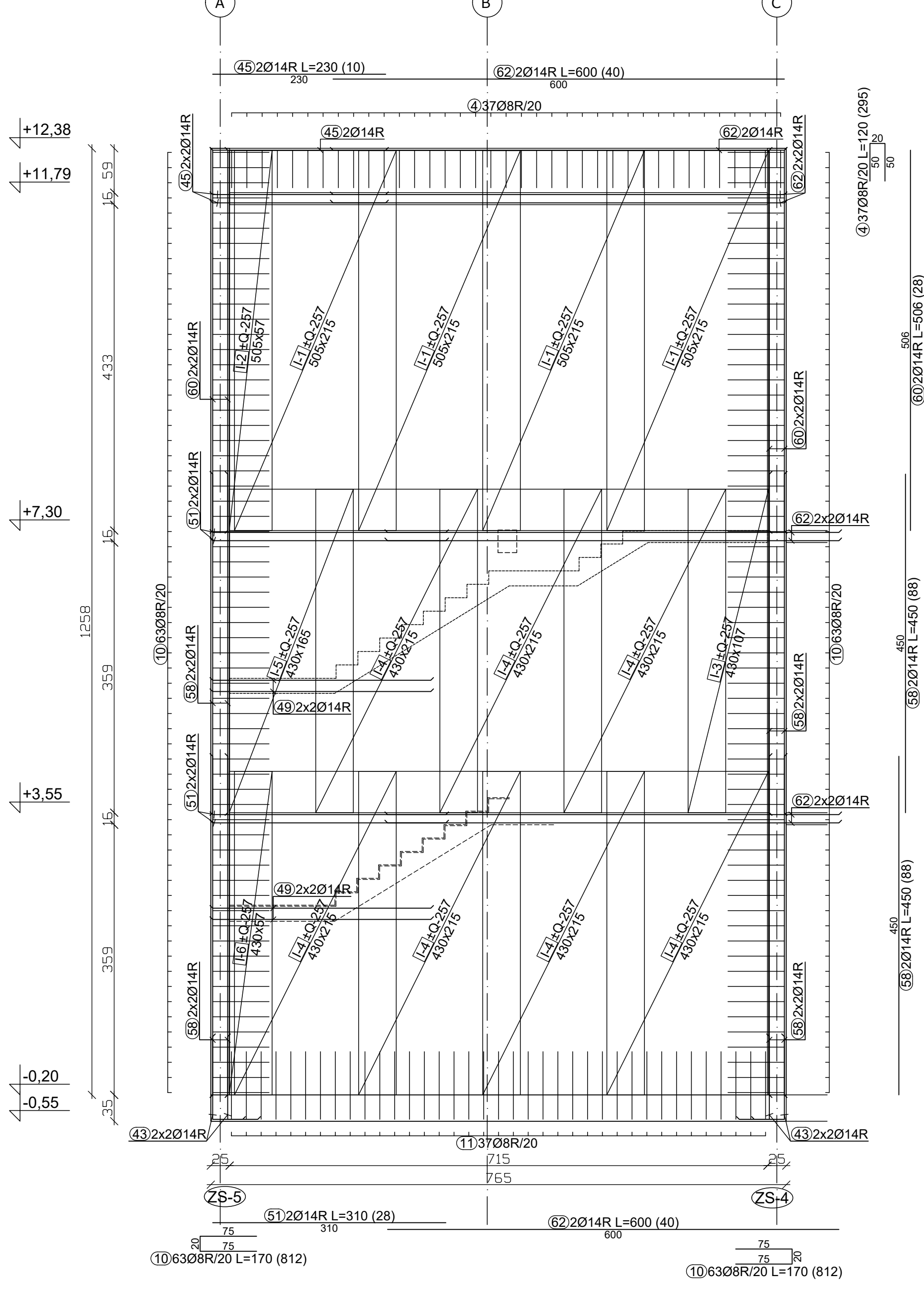
ARMATURA ZIDU STOPNIŠČA ZS-4  
Dz = 25 CM, kom : 1  
M : 1 : 50



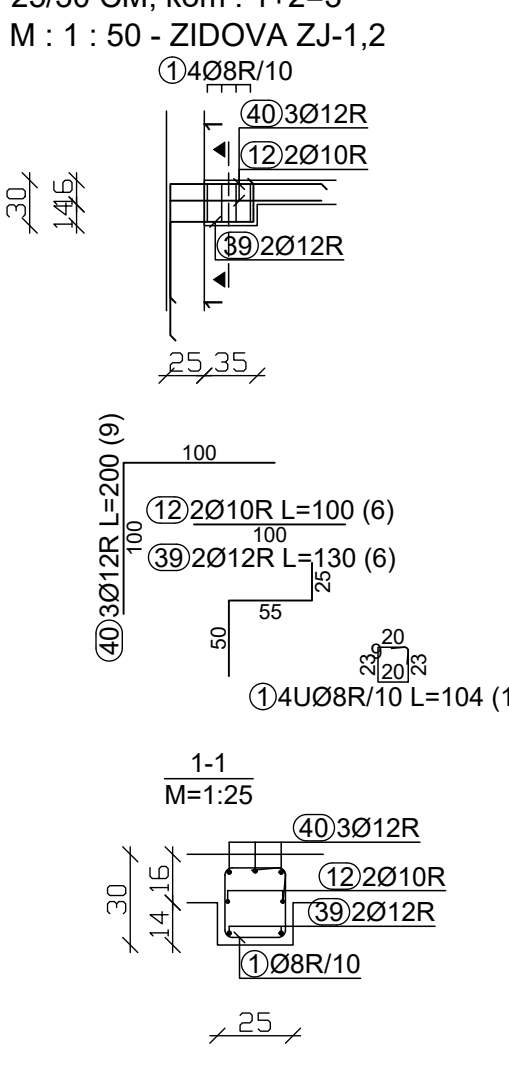
ARMATURA ZIDU STOPNIŠČA ZS-5  
Dz = 25 CM, kom : 1  
M : 1 : 50



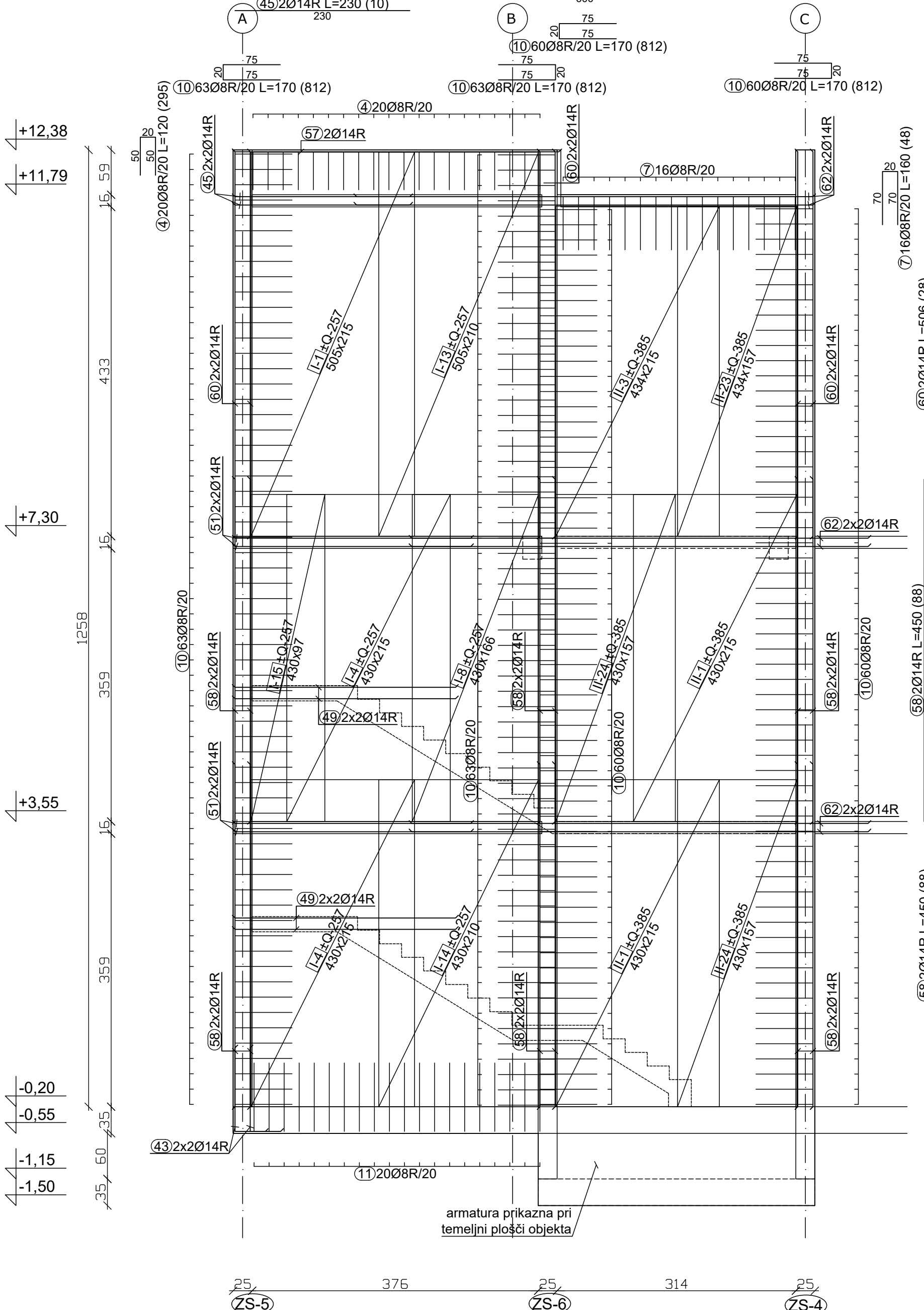
ARMATURA ZIDU STOPNIŠČA ZS-1  
Dz = 25 CM, kom : 1  
M : 1 : 50



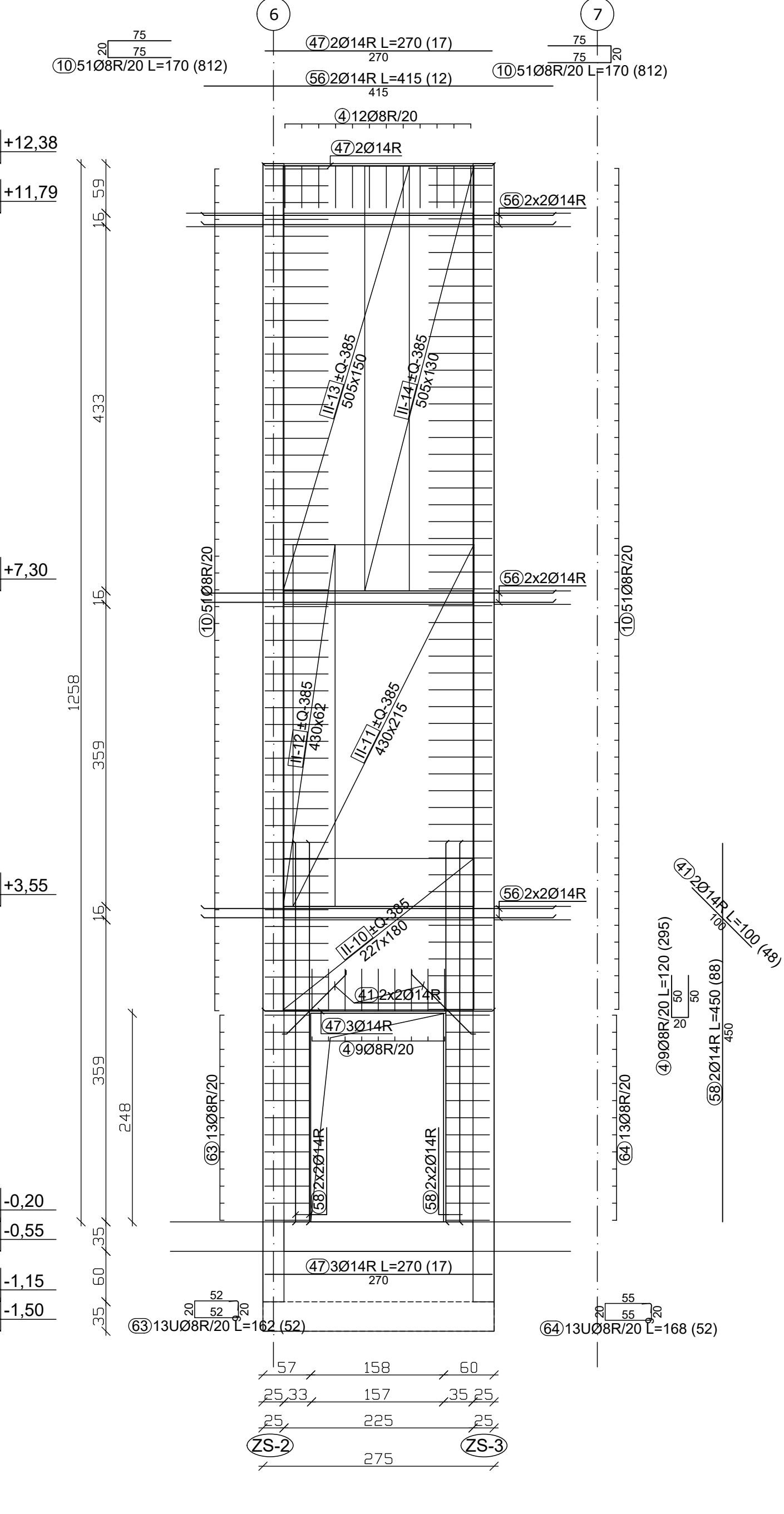
ARMATURA QUACITEV ZA SOHO  
250/30 CM, kom : 1+0+5  
M : 1 : 50 - ZIDOVA ZJ-1,2



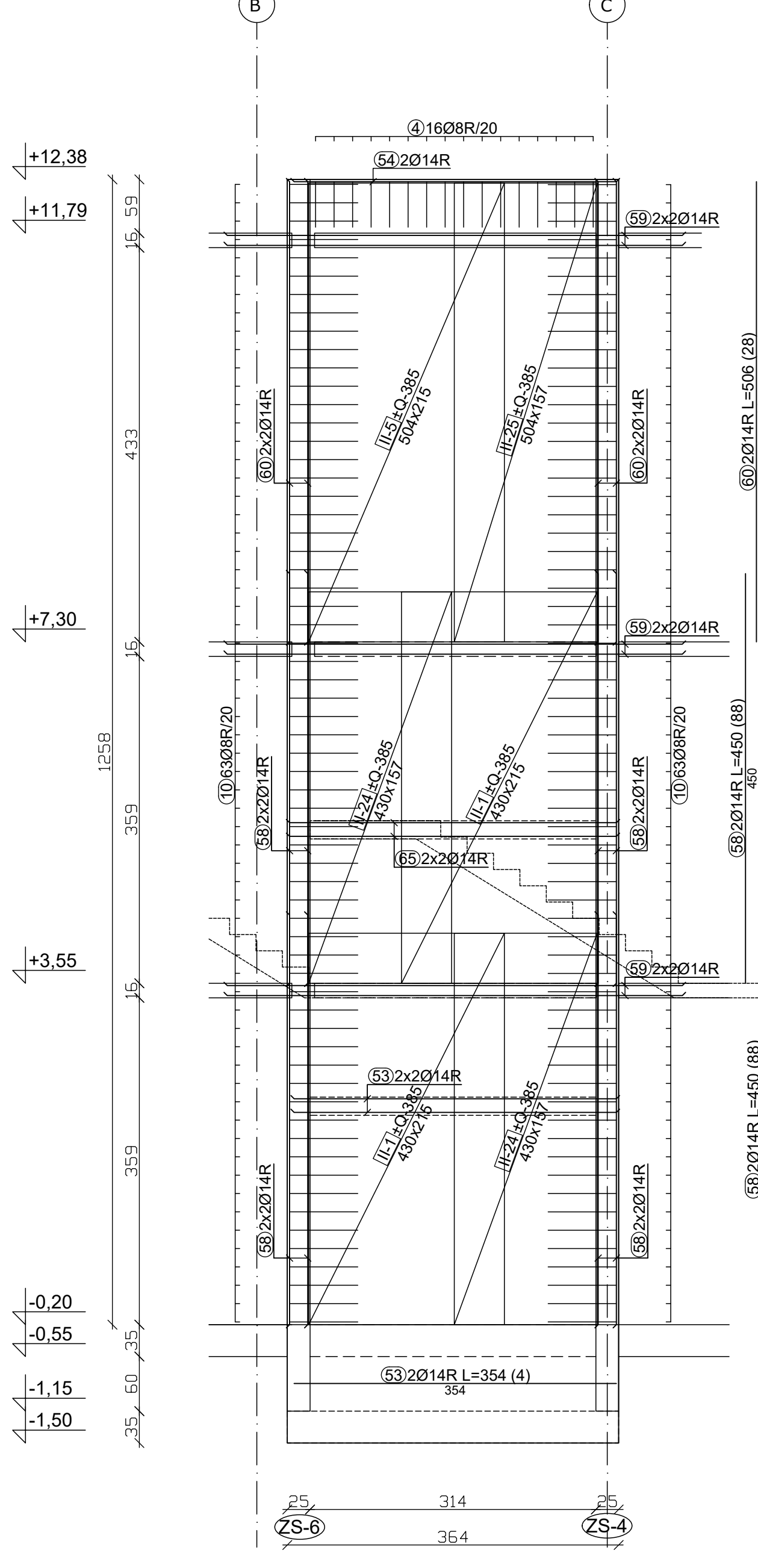
ARMATURA ZIDU STOPNIŠČA ZS-2  
Dz = 25 CM, kom : 1  
M : 1 : 50



ARMATURA ZIDU STOPNIŠČA ZS-6  
Dz = 25 CM, kom : 1  
M : 1 : 50

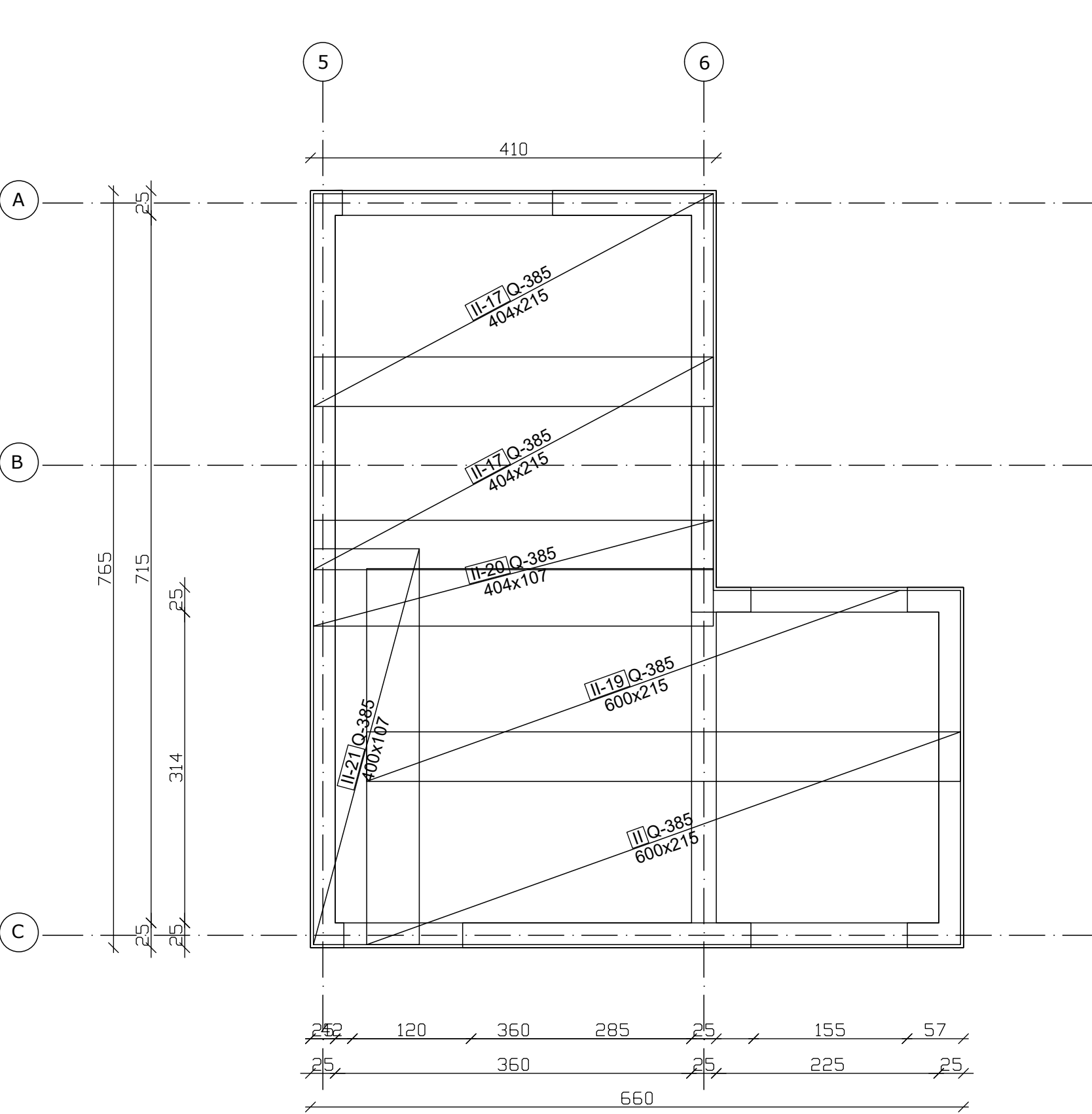


ARMATURA ZIDU STOPNIŠČA ZS-3  
Dz = 25 CM, kom : 1  
M : 1 : 50

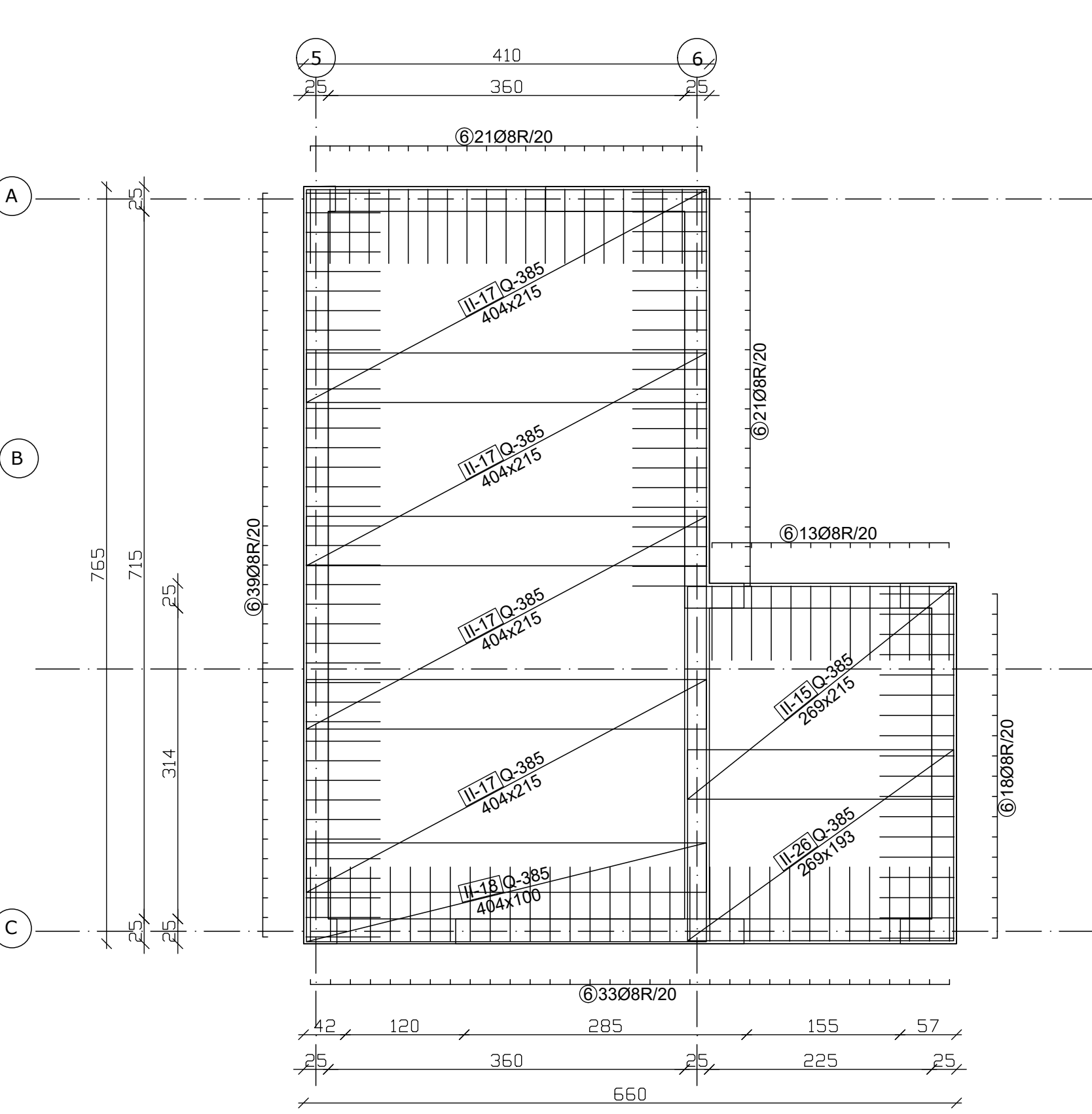


ARMATURA KROVNE PLOŠČE  
Dpl = 16 CM, kom : 1  
M : 1 : 50

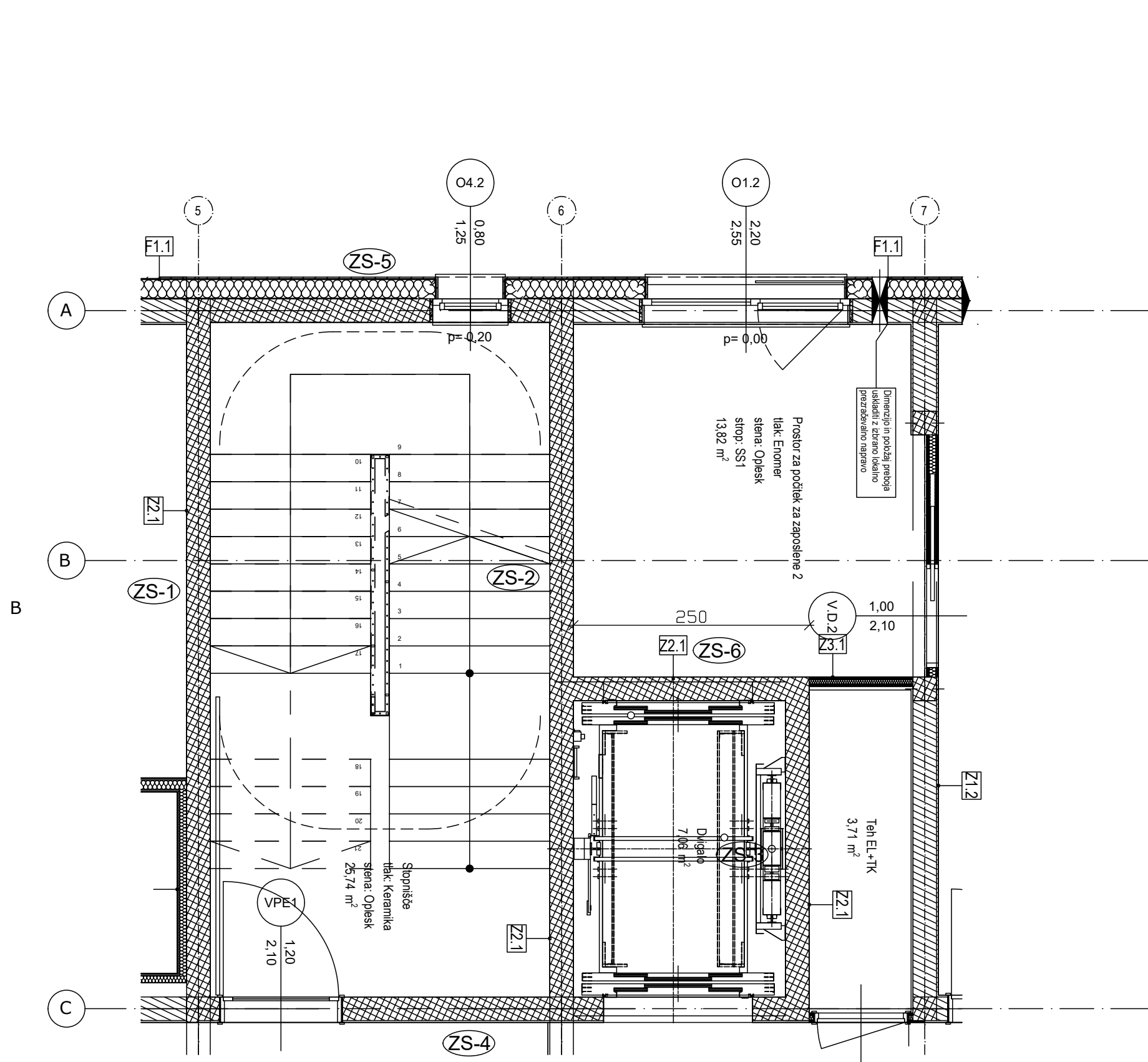
NEGATIVNA ARMATURA - zgornj



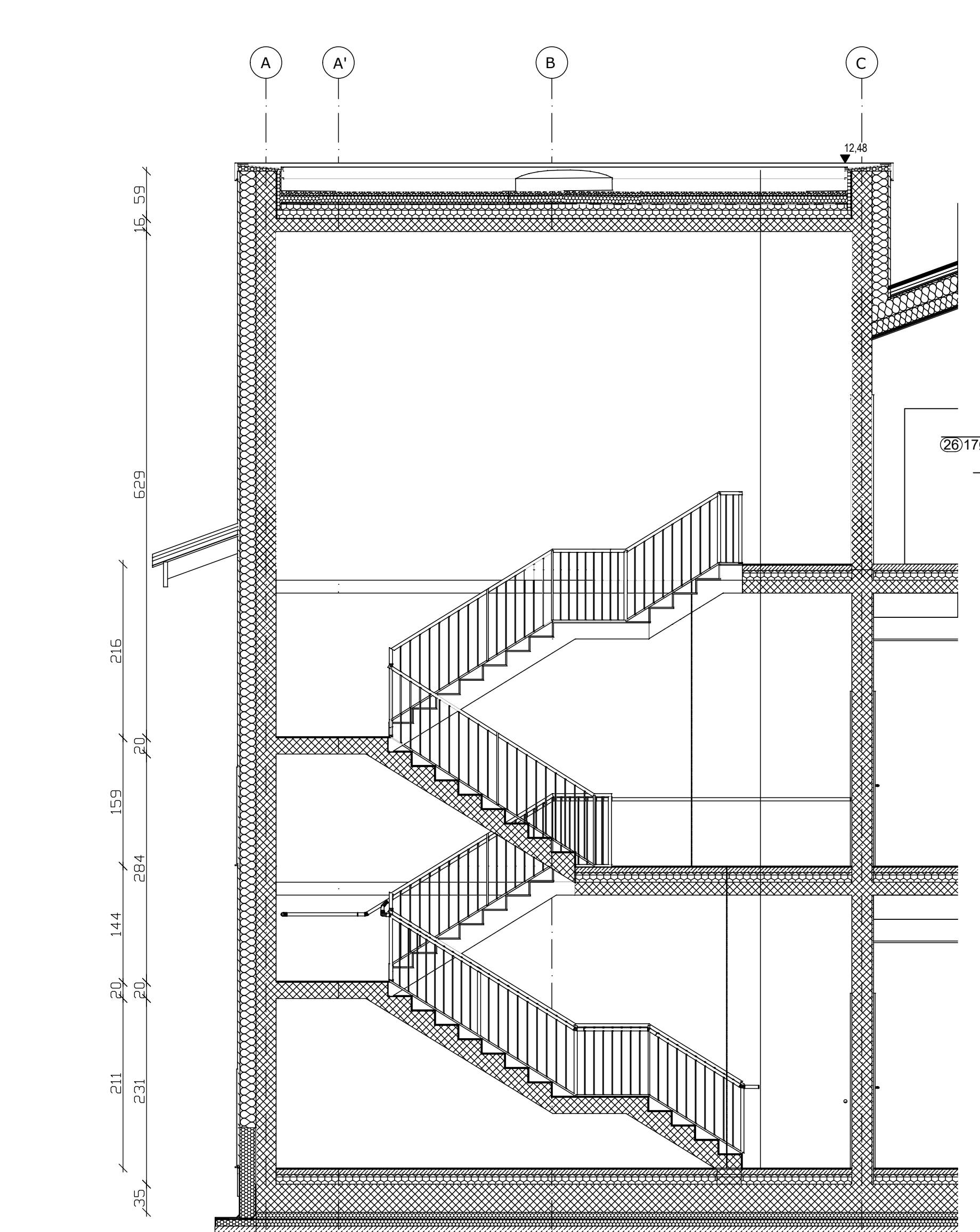
POZITIVNA ARMATURA - spodnj



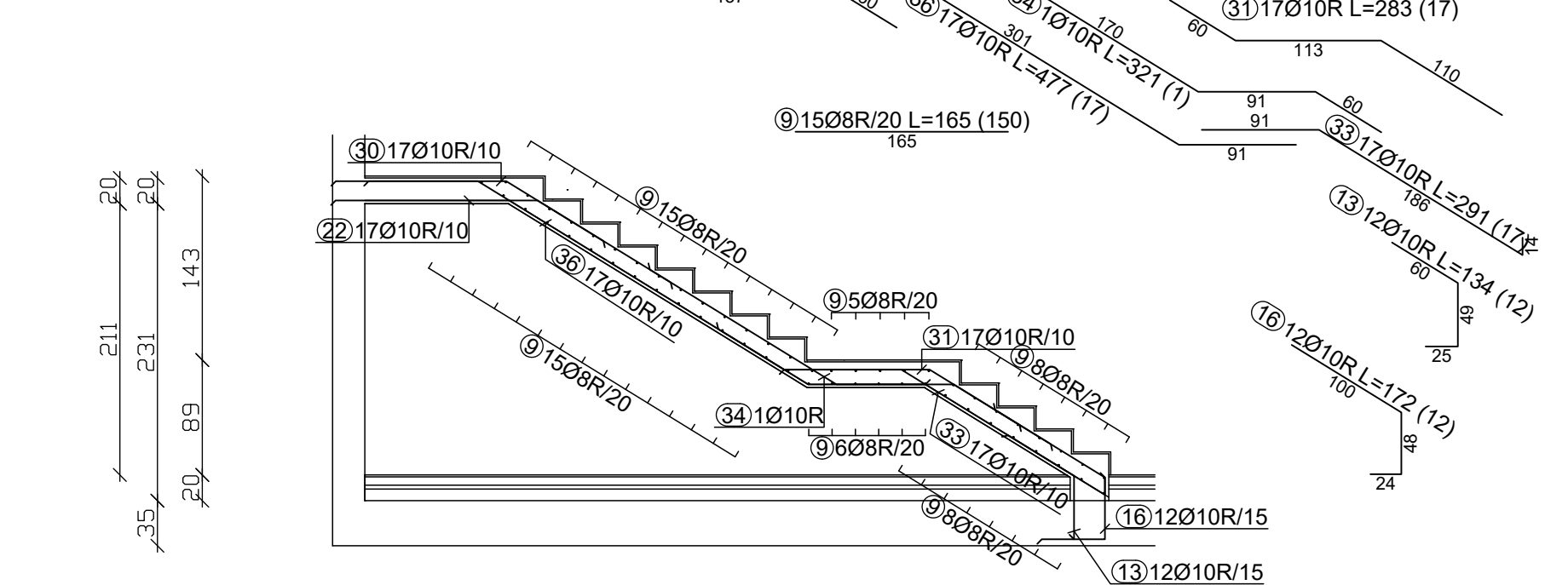
TILORIS STOPNIŠČA IN DVIGALNEGA JAŠKA  
M : 1 : 50



PREREZ STOPNIŠČA  
M : 1 : 50

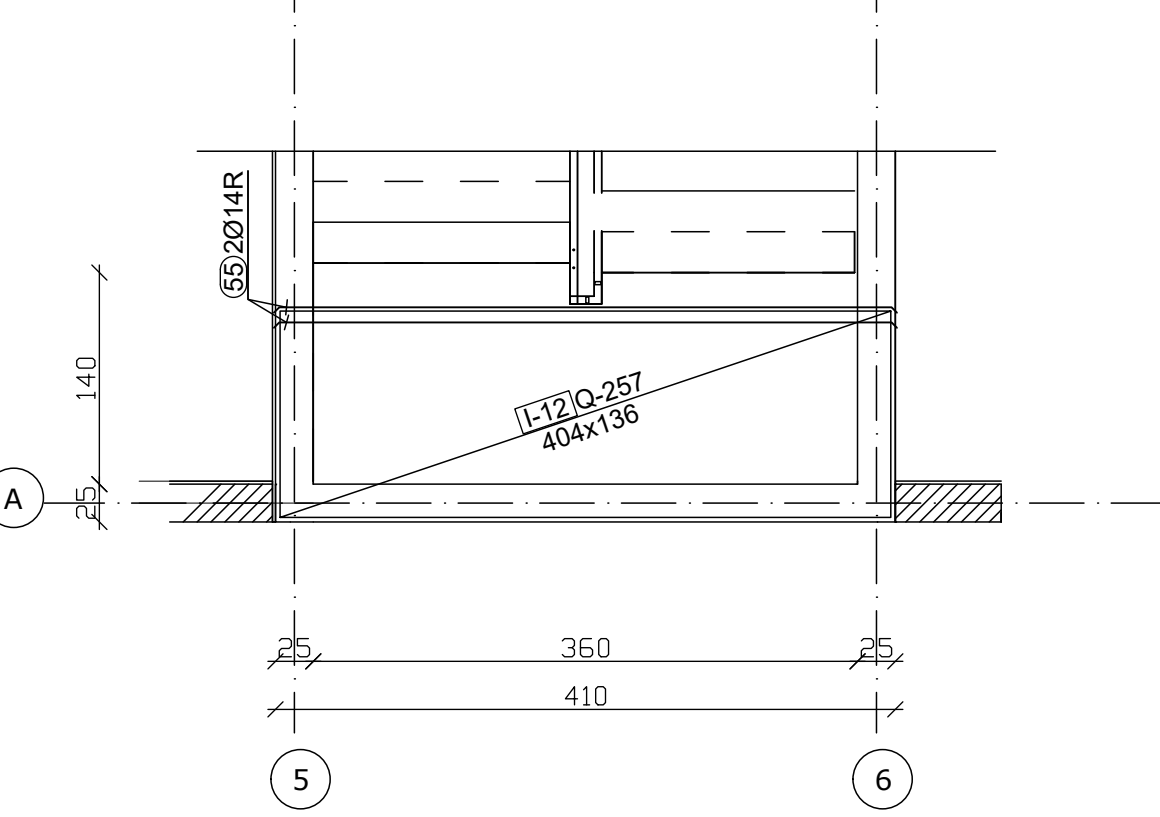


1. RAMA

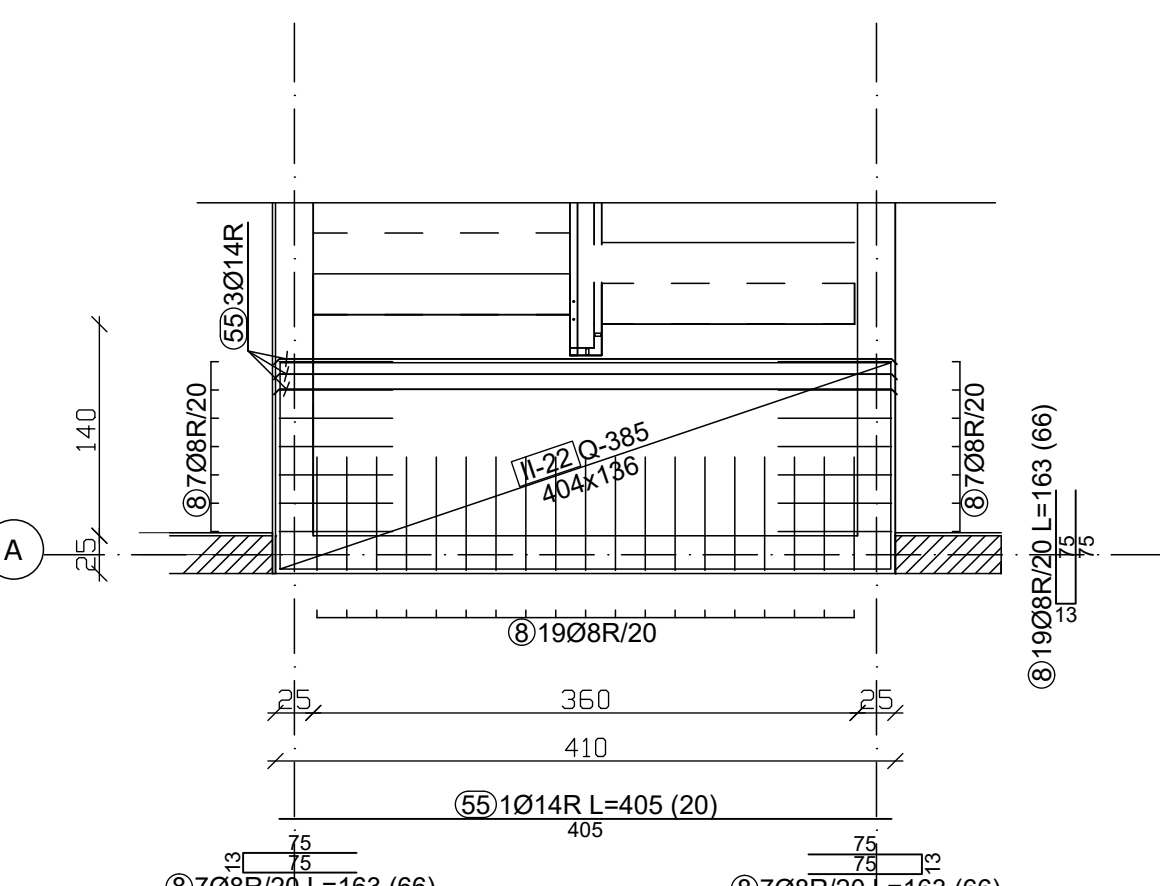


ARMATURA VMESNEGA PODESTA STOPNIŠČA  
Dpl = 20 CM, KOM : 2  
M : 1 : 50

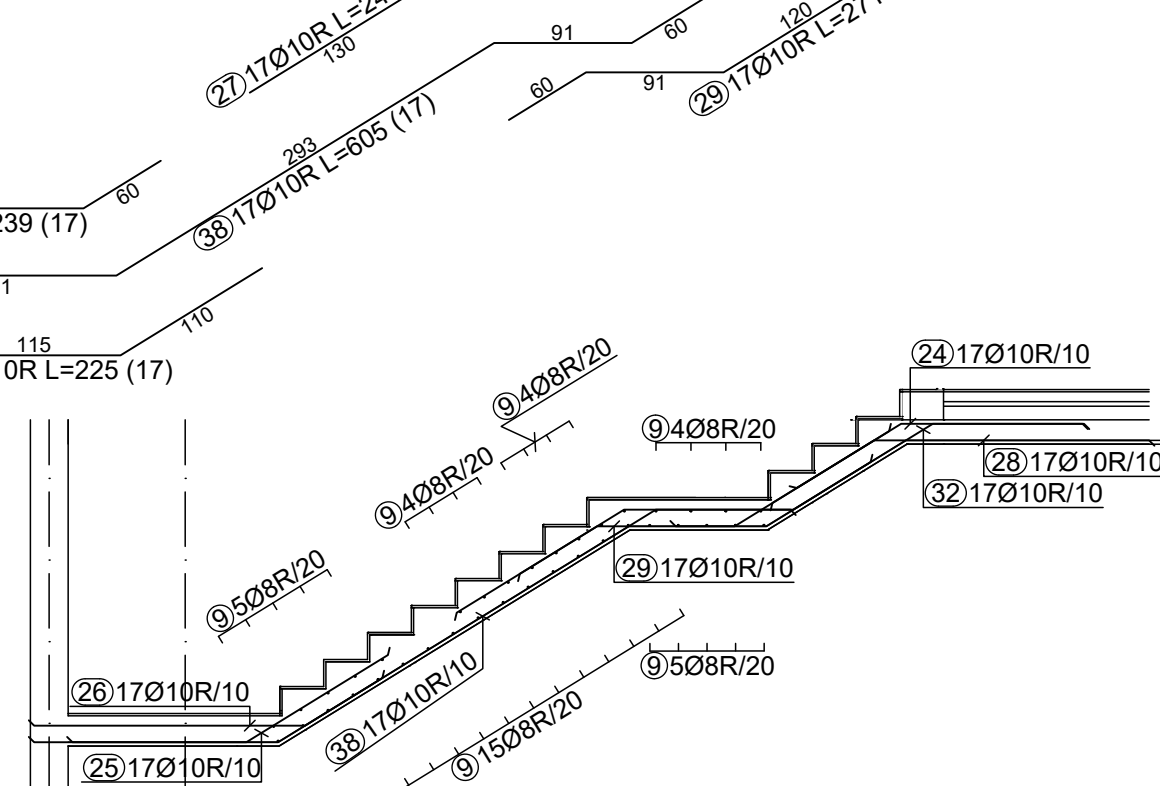
NEGATIVNA ARMATURA - zgornj



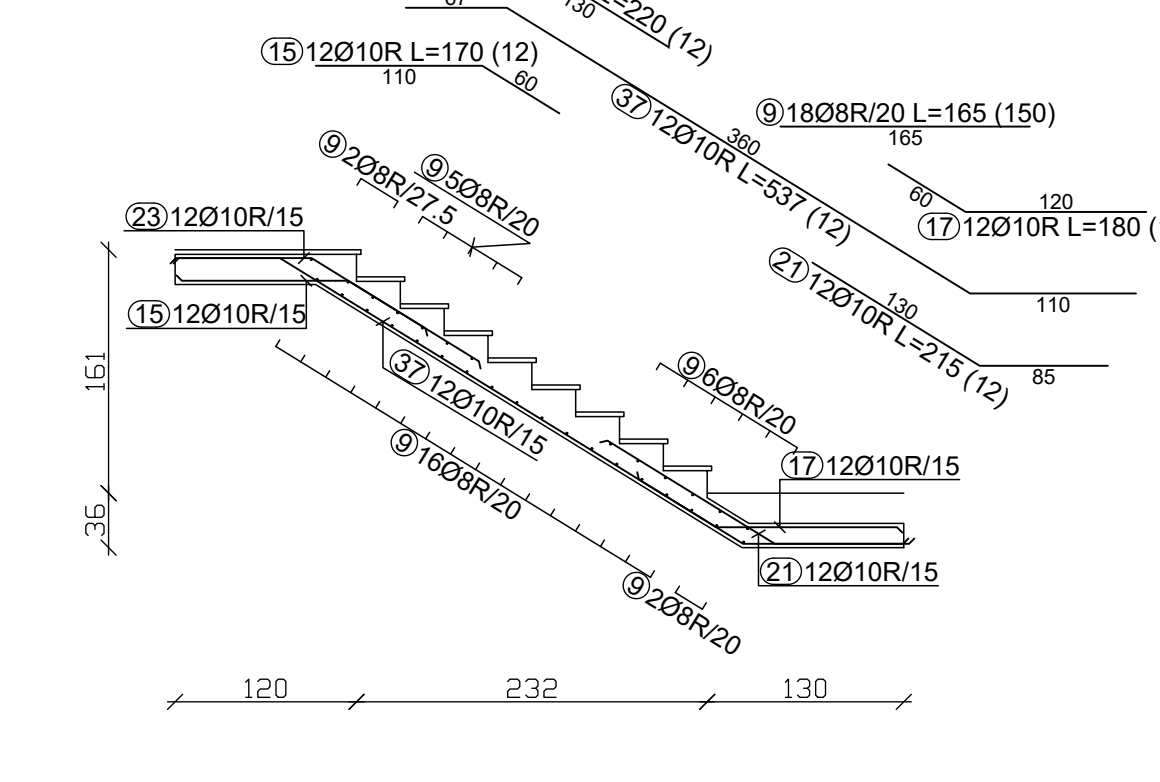
POZITIVNA ARMATURA - spodnj



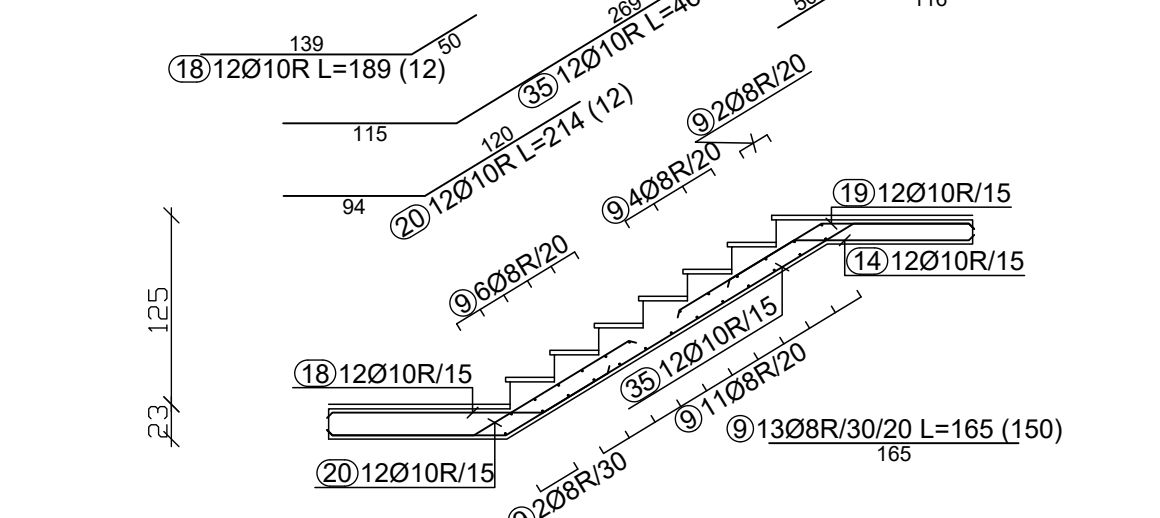
2. RAMA



3. RAMA



4. RAMA



Plošče - specifikacija		Pozicija		Ozn. mreže		B [mm]		L [mm]		n		Tača enote [kg/m²]		Skupna teža [kg]	
col	obloga in mere [mm]	Q	15	15	15	15	15	15	15	15	15	15	15	15	15
2-DISO VIŠNJA GORA - OKNET A- STOPNIŠČE Z DVIGALNIM JAŠKOM (1 kom)															
1	25	8	1.04	12	12.48										
3	25	8	1.22	39	47.58										
4	25	8	1.20	290	354.00										
6	25	8	1.59	145	230.55										
7	25	8	1.60	48	76.80										
8	25	8	1.60	66	107.88										
9	25	8	1.60	150	247.50										
10	25	8	1.70	812	1380.40										
11	25	8	2.00	80	160.00										
12	25	10	1.00	6	6.00										
13	25	10	1.34	12	16.08										
14	25	10	1.66	12	19.92										
15	25	10	1.70	12	20.40										
16	25	10	1.70	12	20.40										
17	25	10	1.80	12	21.60										
18	25	10	1.88	12	22.56										
19	25	10	2.07	12	24.84										
20	25	10	2.14	12	25.68										
21	25	10	2.16	12	25.92										
22	25	10	2.17	12	26.04										
23	25	10	2.20	12	26.40										
24	25	10	2.20	17	37.40										
25	25	10	2.25	17	38.25										
26	25	10	2.36	17	40.00										
27	25	10	2.40	17	40.80										
28	25	10	2.42	17	41.14										
29	25	10	2.71	17	46.07										
30	25	10	2.82	17	47.94										
31	25	10	2.80	17	48.11										
32	25	10	2.86	17	48.13										
33	25	10	2.91	17	49.47										
34	25	10	3.21	1	3.21										
35	25	10	4.80	12	57.60										
36	25	10	4.77	17	81.09										
37	25	10	5.37	12	64.44										

Mreže - nabori rezača		2-DISO VIŠNJA GORA - OKNET A- STOPNIŠČE Z DVIGALNIM JAŠKOM	
col	obloga in mere [mm]	Q	15
2-DISO VIŠNJA GORA - OKNET A- STOPNIŠČE Z DVIGALNIM JAŠKOM (1 kom)			
1	25	8	1.04
3	25	8	1.22
4	25	8	1.20
6	25	8	1.59
7	25	8	1.60
8	25	8	1.60
9	25	8	1.60
10	25	8	1.70
11	25	8	2.00
12	25	10	1.00
13	25	10	1.34
14	25	10	1.66
15	25	10	1.70
16	25	10	1.70
17	25	10	1.80
18	25	10	1.88
19	25	10	2.07
20	25	10	2.14
21	25	10	2.16
22	25	10	2.17
23	25	10	2.20
24	25	10	2.20
25	25	10	2.25
26	25	10	2.36
27	25	10	2.40
28	25	10	2.42
29	25	10	2.71
30	25	10	2.82
31	25	10	2.80
32	25	10	2.86
33	25	10	2.91
34	25	10	3.21
35	25	10	4.80
36	25	10	4.77
37	25	10	5.37

- VSE MERE IN KOM ARMATURE KONTROLIRATI NA GRADBIŠČU IN JIH PO POTREBI USTREZNO KORIGIRATI, PRED NAROČILOM ARMATURE !!!

BETON - C25/30 ZAŠČITNI SLOJ BETONA 2,5CM  
ARMATURA - S500

ARMATURA STOPNIŠČA Z DVIGALNIM JAŠKOM  
-objekt A  
M : 1 : 50